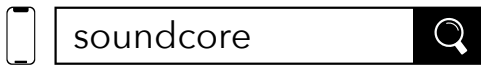


# soundcore V30i User Guide (A3873)

## APP



Google Play and the Google Play logo are trademarks of Google Inc.



Apple and the Apple logo are trademarks of Apple Inc.

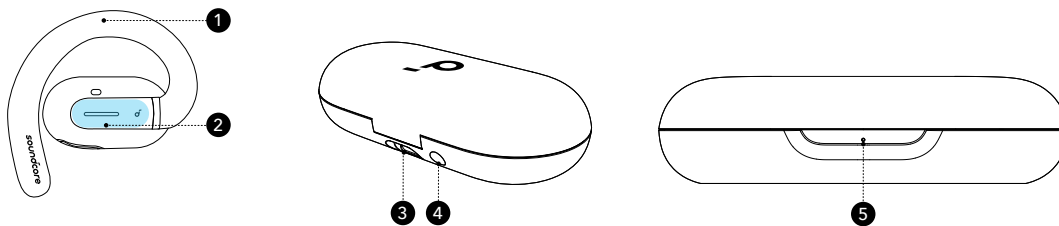


Download the soundcore app to adjust EQ settings, update firmware, and explore more.

If your earbuds cannot connect with the soundcore app, re-install the app or update it to the latest version in your mobile app store.

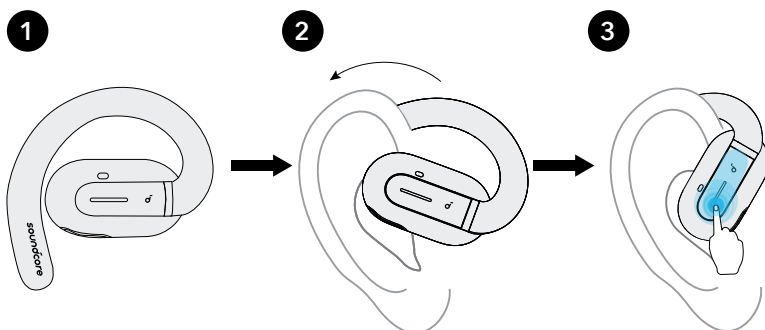
Click this link to download: <http://dl-soundcore.soundcore.com/qcdl?flow=soundcore>

## OVERVIEW



1. Earhook
2. Touch Control Area
3. USB-C Charging Port
4. Reset Button
5. LED Indicator

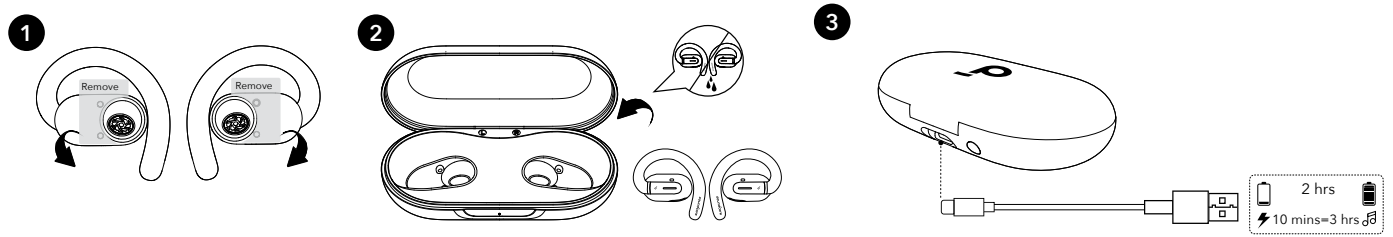
## WEARING



Pick up the earbuds from the charging case, then rotate the ear hooks along the auricle of your ear to achieve proper positioning.

# CHARGING

Remember to tear off the protective films on the earbuds before first use.

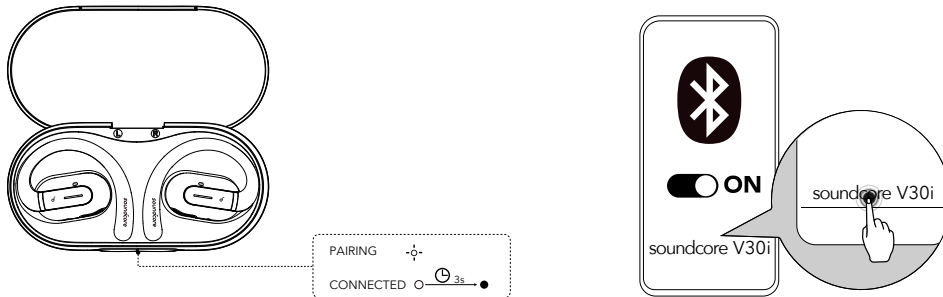


- Place the earbuds in the charging case and close it.
  - Fully dry off the earbuds and the USB-C charging port before charging.
- Connect the charging case to a power supply by using a certified USB-C charging cable.

## Low Battery Indication

Earbuds: You will hear a voice prompt of battery running low.  
 Charging case: The LED indicator will light up in red for 3 seconds and then go off.

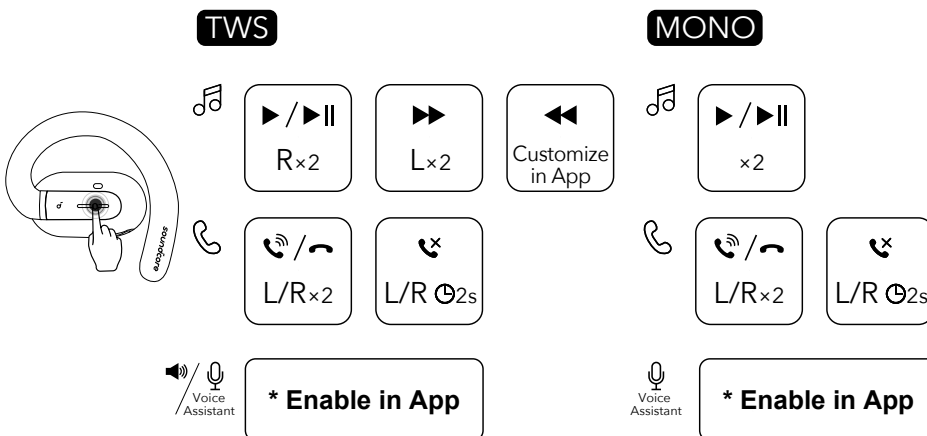
# POWERING ON & PAIRING



Open the charging case, the earbuds will automatically power on and enter Bluetooth pairing mode. Select **"soundcore V30i"** on your device's Bluetooth list to connect. When pairing, the LED indicator on the charging case will start flashing. After the pairing is successful, the LED indicator on the charging case will stay on for 3 seconds and then go off.

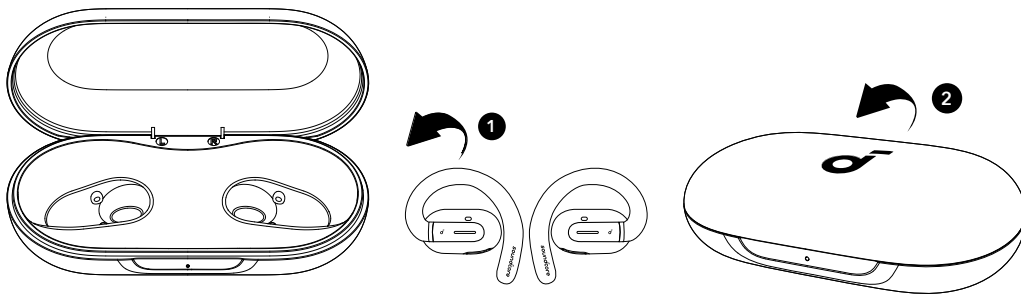
Once connected successfully, they'll automatically reconnect to your device every time you open the charging case, as long as you haven't deleted the pairing history from your device.

# TOUCH CONTROLS



		TWS mode	Mono mode
🎵	Play / Pause	Touch twice (R)	Touch twice
	Previous track	Customize in soundcore app	/
	Next track	Touch twice (L)	/
☎️	Answer / End a call	Touch twice (L/R)	Touch twice (L/R)
	Reject a call	Touch and hold for 2 seconds (L/R)	Touch and hold for 2 seconds
🔊+	Volume up	*Enable in soundcore app	/
🔊-	Volume down	*Enable in soundcore app	/
🗣️	Activate voice assistant	*Enable in soundcore app	*Enable in soundcore app

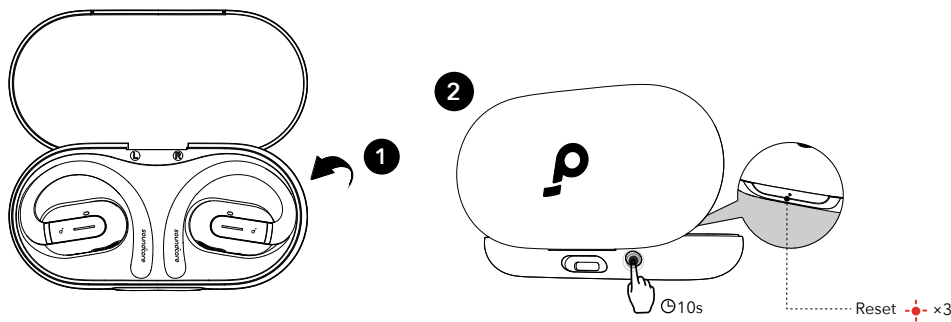
## POWERING OFF



To power off, return the earbuds to the charging case and close it.

The earbuds will automatically power off after 30 minutes if they are not connected. The duration can be customized in the soundcore app.

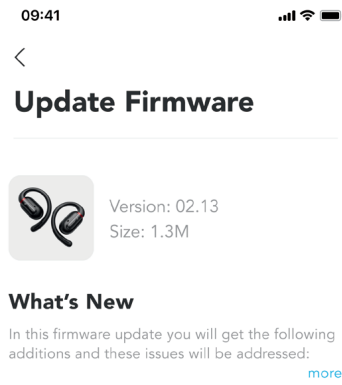
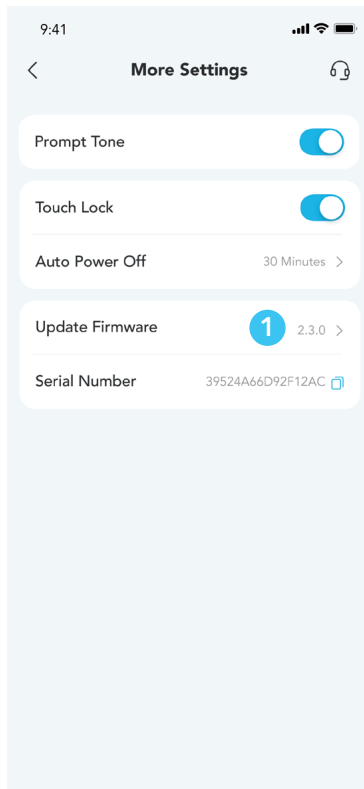
## RESET



Reset if the earbuds have issues pairing with each other or with other devices.

Delete the pairing history from your Bluetooth device first. Place the earbuds in the charging case and leave the case open. Press and hold the reset button on the charging case for 10 seconds until the LED indicator on the charging case flashes red three times. At this time, your earbuds have been successfully reset.

## FIRMWARE UPDATE



You will be informed once a new firmware version is detected when you connect the earbuds to the app. Ensure the earbuds are placed in the charging case and the case remains open until the firmware update is complete. During the update, ensure the earbuds are being charged and avoid any usage.

## SPECS

Specifications are subject to change without notice.

Input	5V $\pm$ 1A
Output	5V $\pm$ 0.3A (0.15A per port)
Battery capacity	70mAh $\times$ 2 (earbuds); 500mAh (charging case)
Charging time	2 hours (earbuds); 2 hours (charging case)
Driver unit	14.2mm dynamic driver
Frequency response	20 Hz - 20 kHz
Impedance	11 $\Omega$
Waterproof rating (earbuds)	IPX5
Bluetooth version	5.3
Bluetooth range	10 m / 33 ft
Maximum volume	88dB