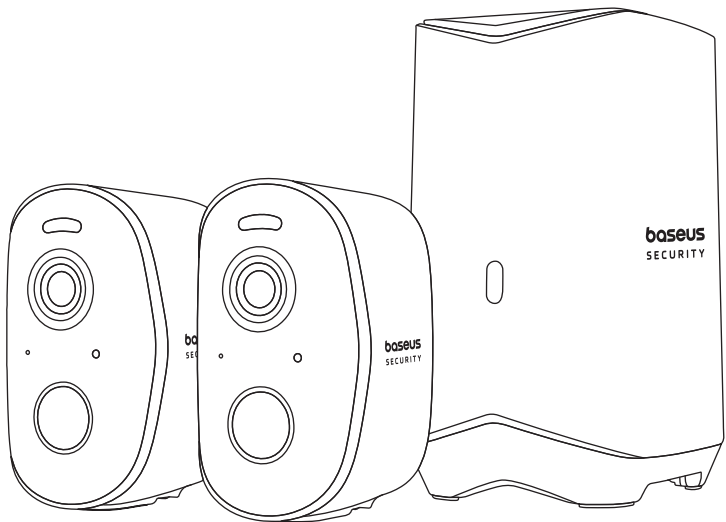


baseus
SECURITY

QUICK START GUIDE

Baseus Security N1 Plus
Outdoor Camera 2K 2-Cam Kit



1.Package Including

Baseus Security H1 HomeStation

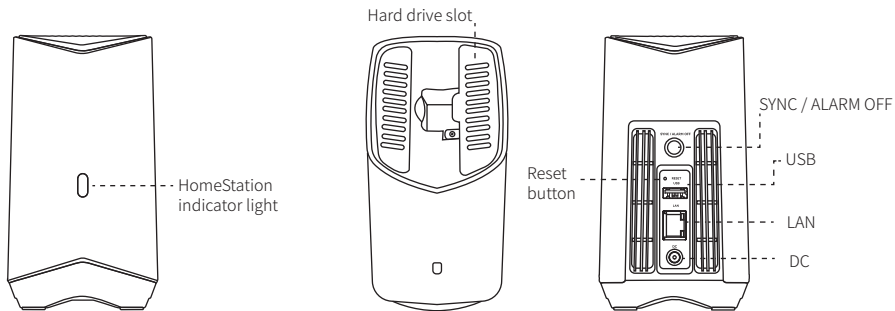
Baseus Security H1 HomeStation
H1 HomeStation×1(Model: S1UA00)
Power Adapter×1
100Mbps Ethernet Cable×1
Screw Pack×1

Baseus Security N1 Plus Outdoor Camera

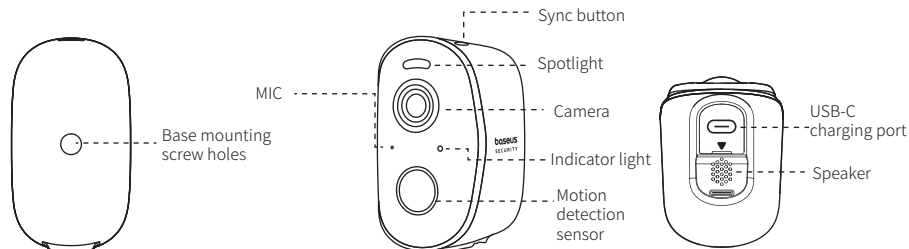
Baseus Security N1 Plus Outdoor Camera
N1 Plus Camera×2 (Model: S0TZ00)
Camera Charging Cable×1 (USB-A to USB-C)
Screw Mount×2

2.Product Overview

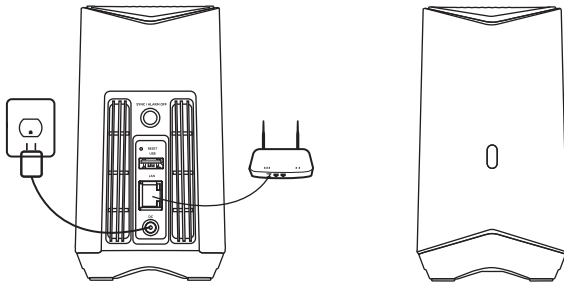
① H1 HomeStation



② N1 Plus Camera



3.Setup Instructions



① Turn on the H1 HomeStation and connect it to your router. When the LED light turns blue, it means the H1 HomeStation is ready for setup (this will take approximately 1 minute).

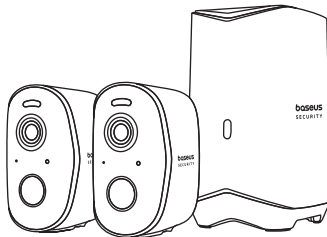


Google Play and the Google Play logo are trademarks of Google Inc.



Apple and the Apple logo are trademarks of Apple Inc.

② Download and install the baseus Security APP, and register an account.



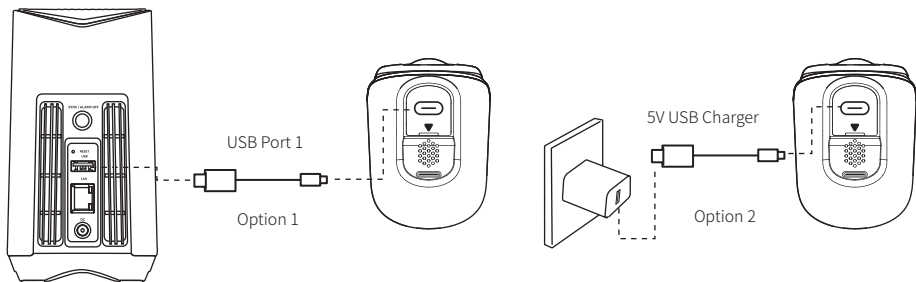
③ Follow the instructions on the screen to add the H1 HomeStation and the camera to your device list.

4. Camera Charging

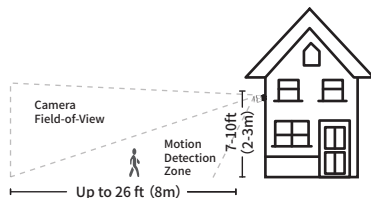
*Please fully charge both cameras before first use. It takes about 6 hours to charge each camera.

Charge Indicator Instructions

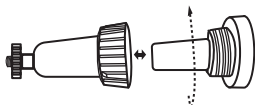
- ① Blue light flashes slowly: in charging.
- ② Indicator light goes out: fully charged.



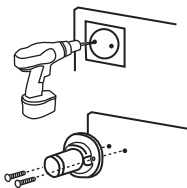
5. Camera Installation



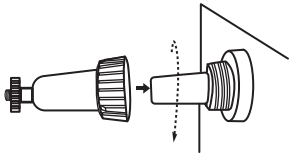
- ① Choose a location where you can get the ideal viewing angle. We recommend to mount the camera 7-10 feet (2-3 meters) above the ground.



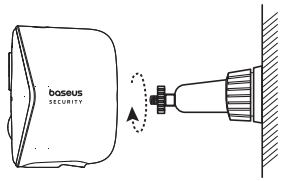
- ② Turn the knob of the mounting bracket counterclockwise to loosen and remove it.



- ③ Drill holes with a 15/64-inch (6 mm) drill bit and insert expansion bolts into the holes; using expansion bolts is necessary for walls made of hard materials such as concrete, brick, or stucco.



④ Screw the knob of the mounting bracket firmly into the mounting hole.



⑤ Hold and screw the camera onto the mounting bracket. Rotate the camera to adjust the viewing angle and check the footage with the live stream in the Baseus Security APP.

*For troubleshooting, check out the help in the Baseus Security APP. See the application page for LED indicator status.

6.Expanding Hard Drive (Optional)

The H1 HomeStation has 16GB storage built-in, and it supports storage expansion with external hard drives as well.

Prepare your hard drive

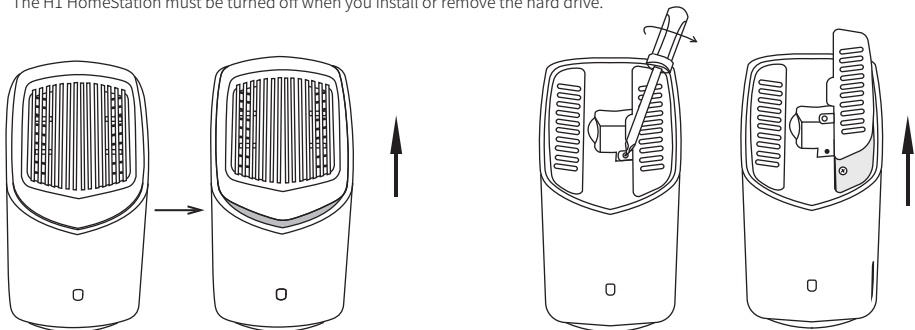
Your hard drive must meet the following requirements:

| | |
|---------------------|---|
| Type | Mechanical hard drive (HDD) or solid state drive (SSD) with SATA interface. |
| Size | 2.5 inches |
| Capacity | 16TB(Max.) |
| Recommending Brands | Western Digital, Seagate, SAMSUNG, Kingston, PNY, Crucial, SanDisk. |

*Before adding a hard drive to the H1 HomeStation, please transfer all data on the hard drive to a safe location.

Install your hard drive

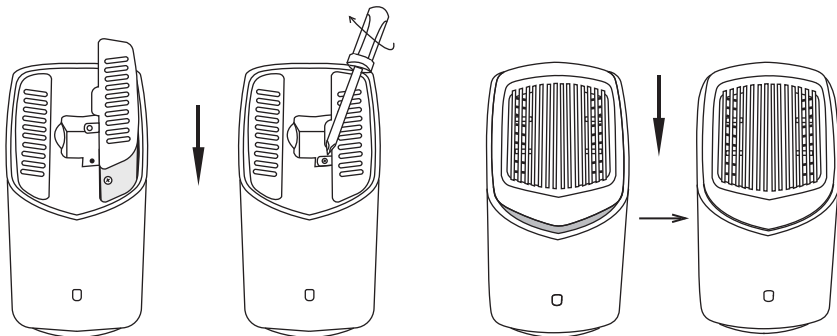
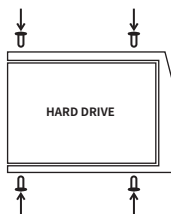
*The H1 HomeStation must be turned off when you install or remove the hard drive.



① Remove the HomeStation top cover.

② Loosen the screws and pull out the hard drive enclosure.

- ③ Use the included screws to secure the new hard drive to the enclosure.



- ④ Insert the enclosure back into the H1 HomeStation and tighten the screws, then put the top cover back in place.
*You can expand your storage room after cutting off power to the HomeStation by following the steps above.
The new hard drive must be initialized through the Baseus Security APP for use with the H1 HomeStation.

7. Product Specifications

① H1 HomeStation
Input Power: 12V-2A (Max.)
USB-A Output: 5V-2A (Max.)
Ethernet Port: 100Mbps (Max.)

② N1 Plus Camera
Resolution: 2304 × 1296
Night Vision: color night vision
Input: 5V-2A (Max.)
Waterproof Rating: IP67

The above data are provided by the Baseus Lab; actual use will vary depending on the specific circumstances.

8. Notice

- The device is not a toy.
- Choking Hazard: The product contains (or comes with) small parts, plastic elements, cables and parts that may cause choking

hazard. Keep your camera and its accessories out of the reach of small children. Consult a physician immediately if small parts are swallowed.

- Strangulation Hazard: Children get strangled in cords. Keep cords out of the reach of children (more than 3ft/0.9m away).
- The suitable temperature for S0TZ00 and accessories is - 20°C to 50°C (Charging temperature is 0°C to 40°C); The suitable temperature for S1UA00 and accessories is - 10°C to 40°C;

When charging, please place the device in an environment that has a normal room temperature and good ventilation.

- Unless specifically indicated that it is safe to do so in the user guide or instruction manual, do not use this device in an environment that exceeds the recommended low or high temperature.
- Unless specifically indicated that it is safe to do so in the user guide or instruction manual, avoid exposing your device to direct sunshine or excessively wet environments.
- For pluggable equipment, the socket-outlet shall be easily accessible.
- Use only the adapter provided by the manufacturer. Using unauthorized adapters may cause danger and violate the authorized use of the device or the warranty article.

CAUTION: RISK OF EXPLOSION IF BATTERY IS REPLACED BY AN INCORRECT TYPE. DISPOSES OF USED BATTERIES ACCORDING TO THE INSTRUCTIONS.

9. Safety



This symbol indicates that this product shall not be treated as household waste. Instead, it shall be handed over to the applicable collection point for the recycling of electrical and electronic equipment. Follow local rules and never dispose of the product with normal household waste.

FCC Statement

This device complies with Part 15 of the FCC Rules. Operation is subject to the following two conditions: (1) this device may not cause harmful interference, and

(2) this device must accept any interference received, including interference that may cause undesired operation.

Any Changes or modifications not expressly approved by the party responsible for compliance could void the user's authority to operate the equipment.

This equipment has been tested and found to comply with the limits for a Class B digital device, pursuant to part 15 of the FCC Rules. These limits are designed to provide reasonable protection against harmful interference in a residential installation. This equipment generates, uses and can radiate radio frequency energy and, if not installed and used in accordance with the instructions, may cause harmful interference to radio communications. However, there is no guarantee that interference will not occur in a particular installation. If this equipment does cause harmful interference to radio or television reception, which can be determined by turning the equipment off and on, the user is encouraged to try to correct the interference by one or more of the following measures:

- Reorient or relocate the receiving antenna.
- Increase the separation between the equipment and receiver.
- Connect the equipment into an outlet on a circuit different from that to which the receiver is connected.
- Consult the dealer or an experienced radio/TV technician for help.

FCC Radio Frequency Exposure Statement

The device has been evaluated to meet general RF exposure requirement. The device can be used in fixed/mobile exposure condition. The min separation distance is 20cm.

The following importer is the responsible party (for FCC matters only)

Company Name: BASEUS TECHNOLOGY (US) INC

Address: 421 S BROOKHURST ST SUITE 1312

ANAHEIM, CA 92804

Telephone: +6-145412699



This product complies with the radio interference requirements of the European Community.

Declaration of Conformity

Shenzhen Baseus Technology Co., Ltd. declares that the product is in compliance with Directive 2014/53/EU. The full text of the EU declaration of conformity is available at the following internet address: <https://eu.baseus.com/pages/euro-compliance>.



RF exposure notice:

The Maximum Permissible Exposure(MPE)level has been calculated based on a distance of $d=20\text{cm}$ between the device and the human body. To maintain compliance with RF exposure requirement, use product that maintain a 20cm distance between the device and human body.

Frequency bands and power are as below:

| Model No. | Function | Operation Frequency | Max. RF Power |
|-----------|----------|---------------------|---------------|
| S0TZ00 | Wi-Fi | 2412-2472MHz | EIRP 18.07dBm |
| S1UA00 | Wi-Fi | 2412-2472MHz | EIRP 17.26dBm |

10.Customer Service

| | |
|---|---|
| Warranty | 24-month limited warranty |
|  | support@baseussecurity.com |
|  | United States Tel: +1(800)2208056 Monday to Friday 10:00 AM -6:00 PM (UTC-5) |

Manufacturer: Shenzhen Baseus Technology Co., Ltd.
Add: 2nd Floor, Building B, Baseus Intelligence Park, No.2008, Xuegang Rd,
Gangtou Community, Bantian Street, Longgang District, Shenzhen
Hotline: +1 800 220 8056 Website: <https://www.baseus.com>

PB5190Z-P0A0

1100025665

Designed by Baseus

Made in China



Warning: Please follow the above safety instructions
otherwise it will cause fire, electric shock,
damage or other injuries.